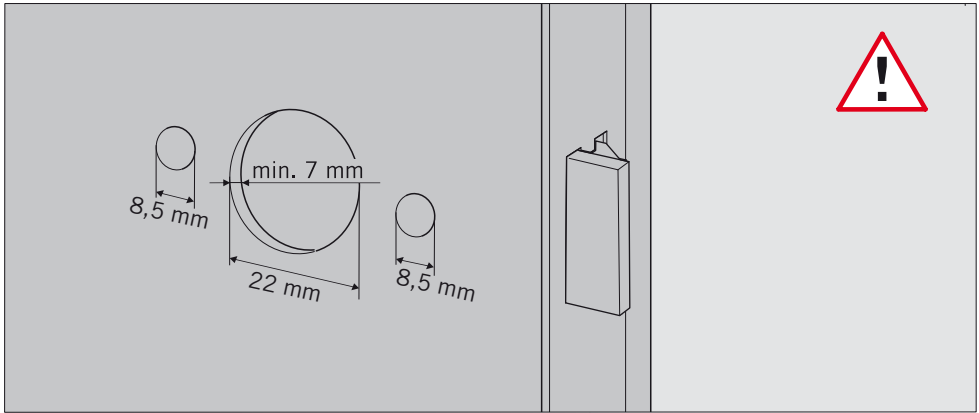


Best.-Nr. 900 500 54067
01/09



Montagevorbereitung

Weitere Informationen u. a. zur bestimmungsgemäßen Verwendung und zur Vermeidung von vorhersehbarer Fehlanwendung finden Sie unter www.dorma.de.

Gewährleistungsansprüche können nur akzeptiert werden, wenn die Montagearbeiten von einem Fachbetrieb durchgeführt werden.

Mounting Preparation

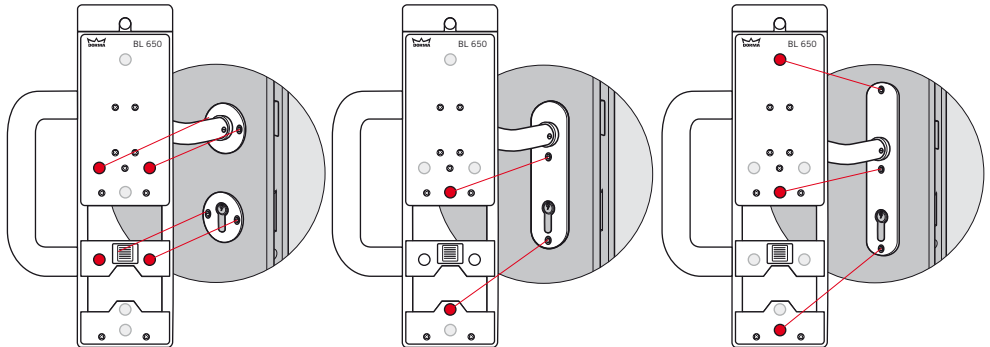
Further information regarding e. g. the intended application as well as how to avoid predictable misuse you find at www.dorma.de.

Warranty claims can only be accepted, if the fitting is carried out by a trained technical specialist.

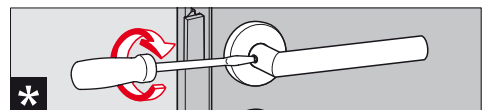
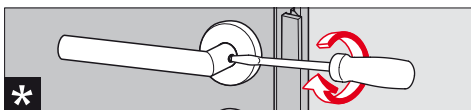
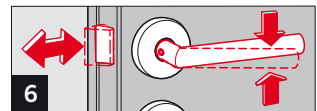
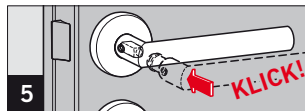
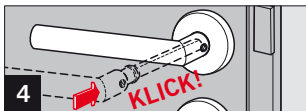
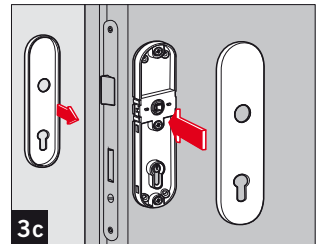
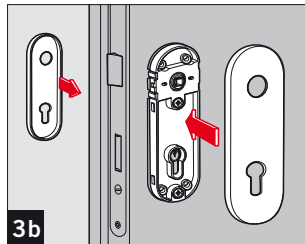
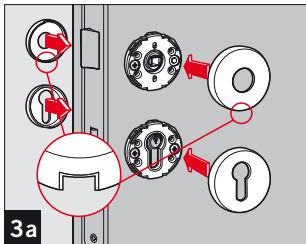
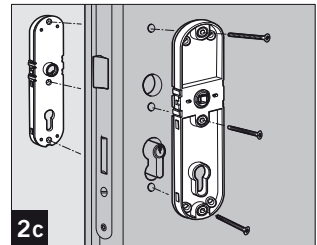
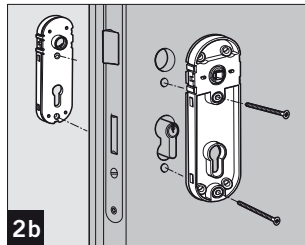
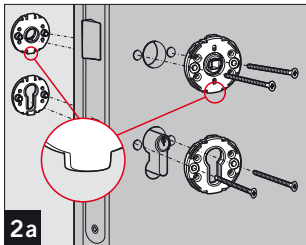
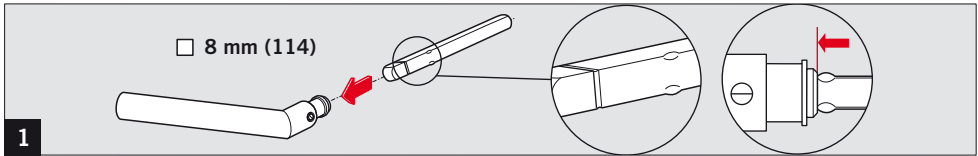
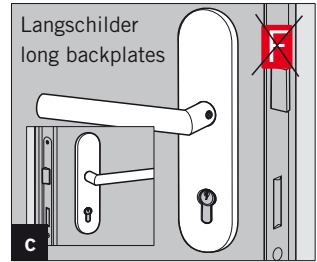
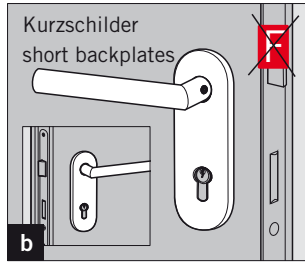
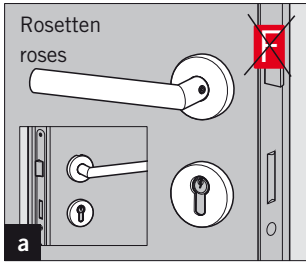
BL 650:

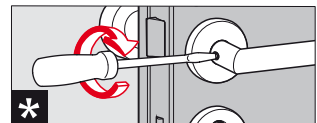
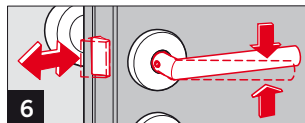
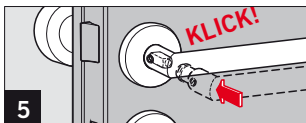
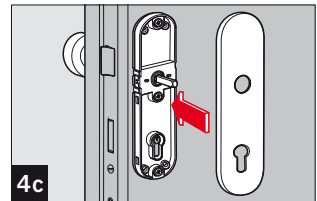
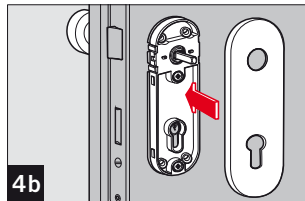
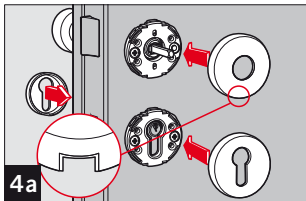
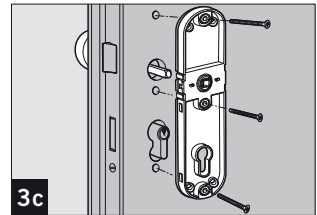
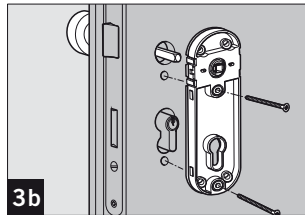
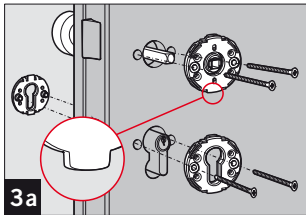
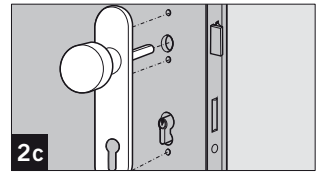
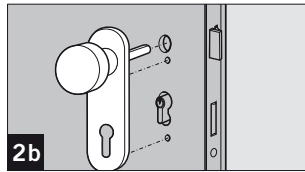
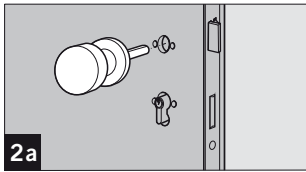
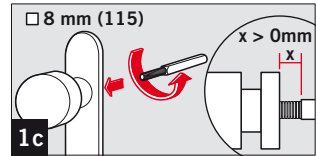
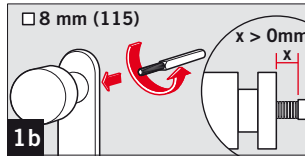
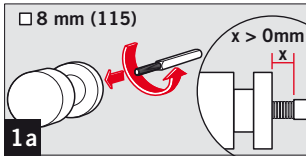
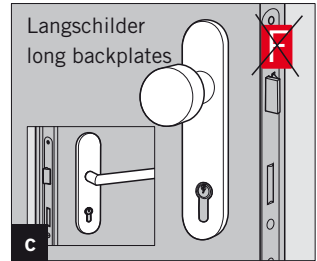
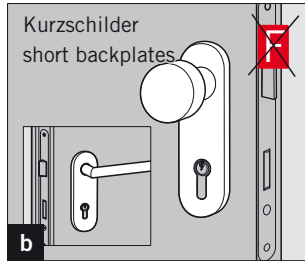
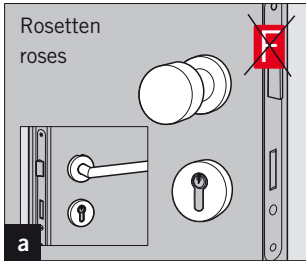
BL 650:

BL 650:

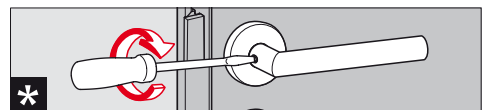
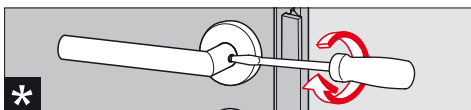
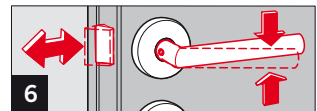
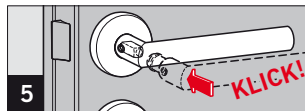
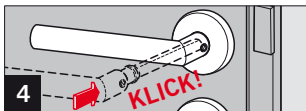
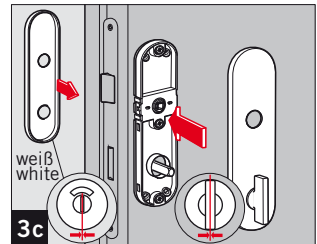
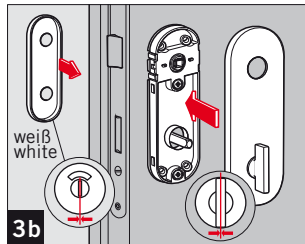
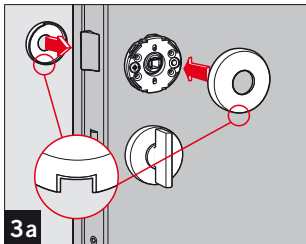
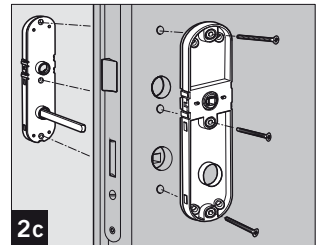
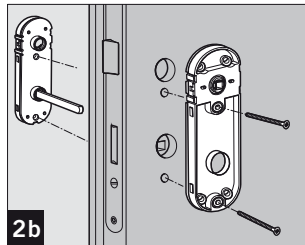
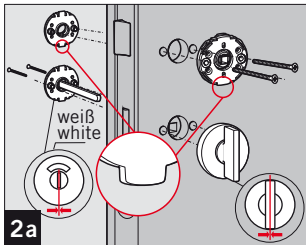
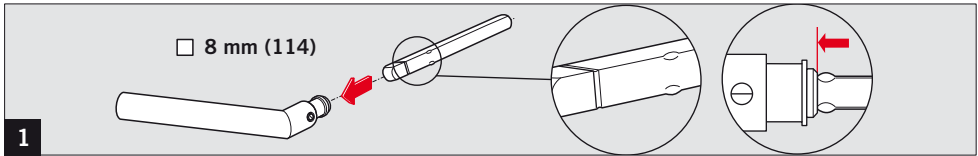
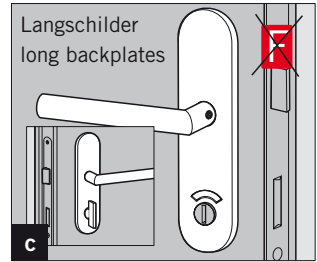
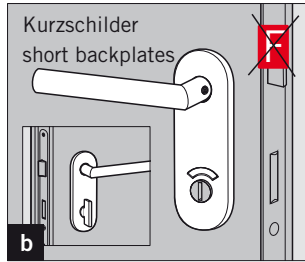
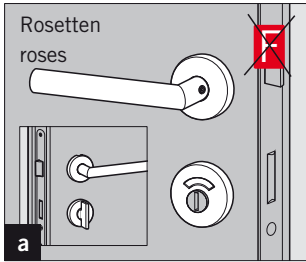


Änderungen vorbehalten
Subject to change without notice





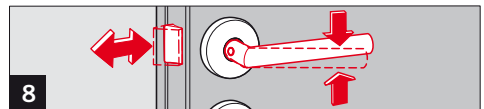
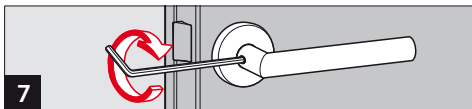
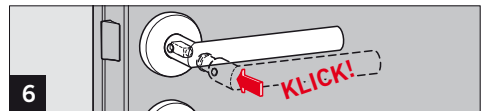
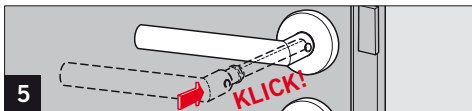
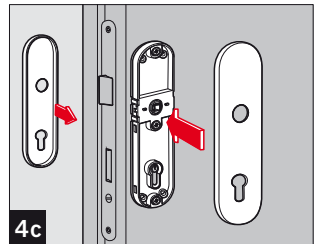
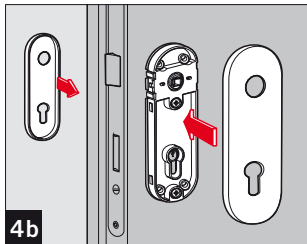
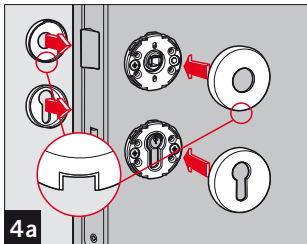
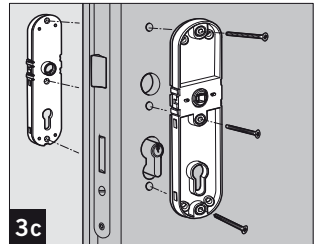
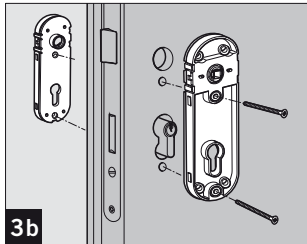
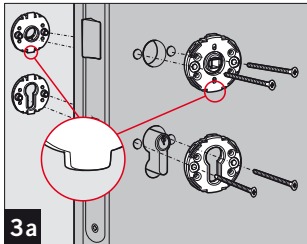
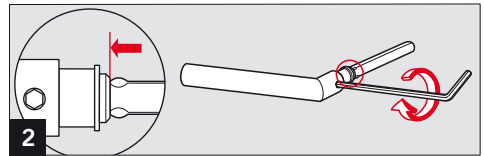
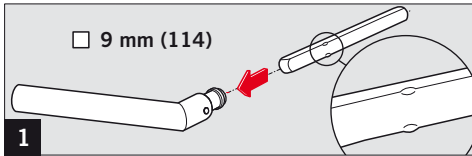
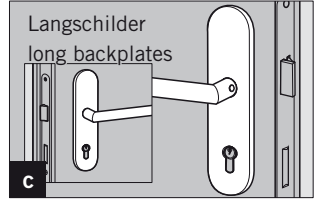
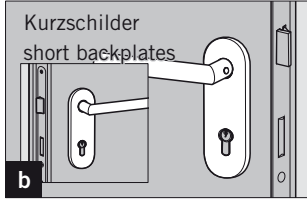
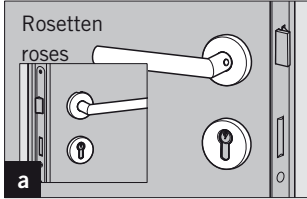
*optional für noch höhere Stabilität
optional for even higher stability





(D) FS-Zulassung nur als komplette DORMA FS-Garnitur oder als Kombination aus DORMA FS-Einzelteilen, die gemäß DIN 18273 eine abgestimmte Baugruppe bilden.

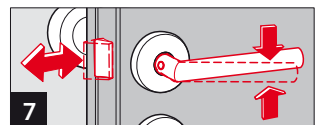
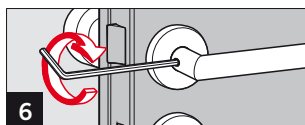
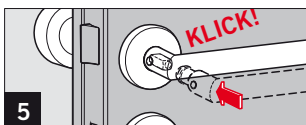
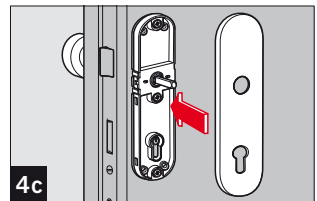
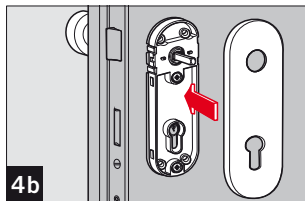
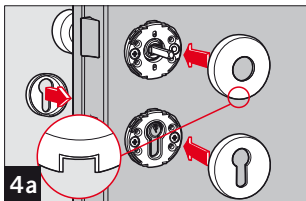
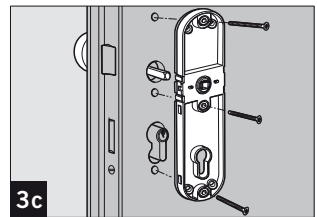
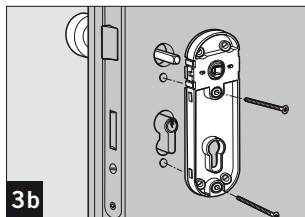
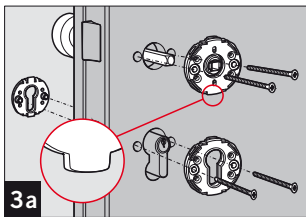
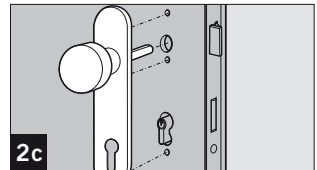
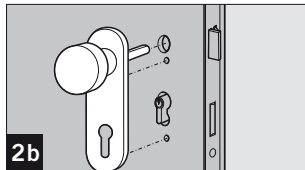
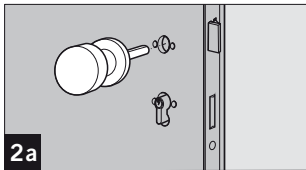
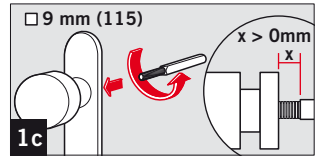
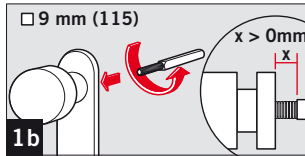
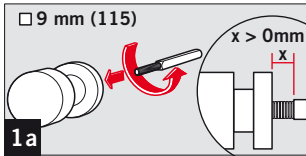
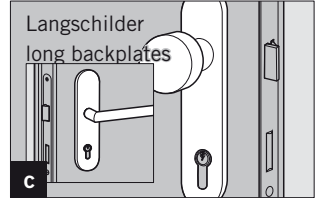
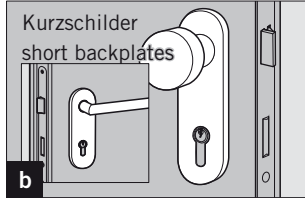
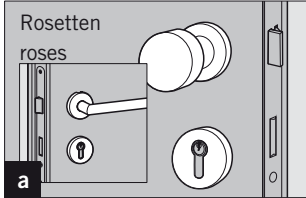
(GB) F-approval only as a complete DORMA F-set or as combination of individual DORMA FS-parts. Constituting an aligned assembly group according to DIN 18273.





(D) FS-Zulassung nur als komplette DORMA FS-Garnitur oder als Kombination aus DORMA FS-Einzelteilen, die gemäß DIN 18273 eine abgestimmte Baugruppe bilden.

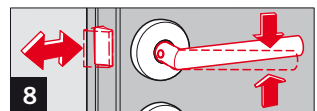
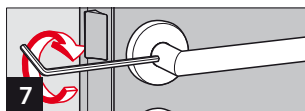
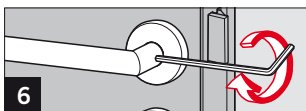
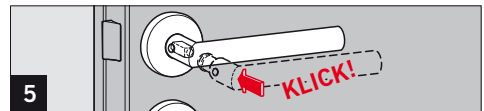
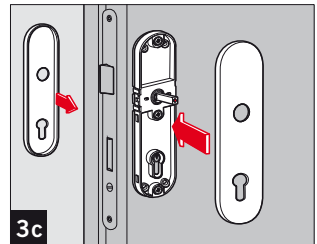
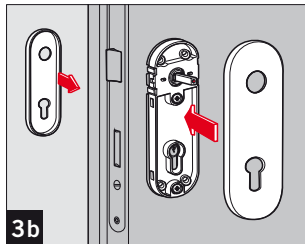
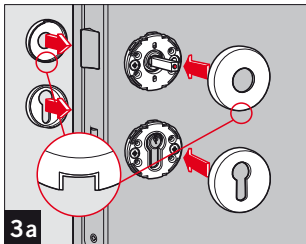
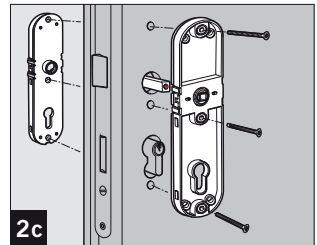
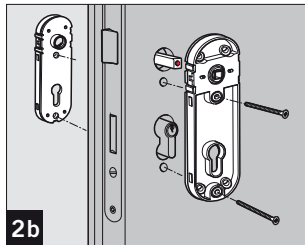
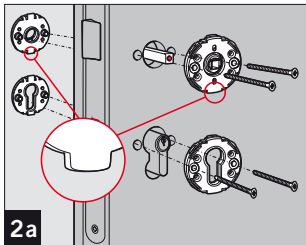
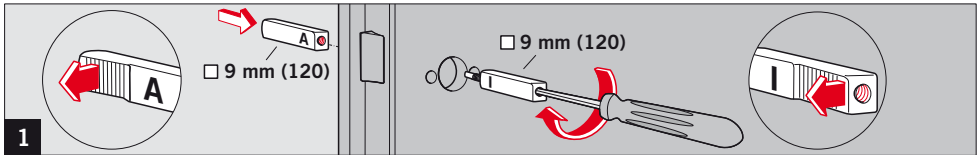
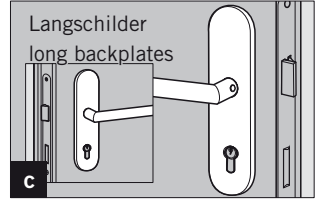
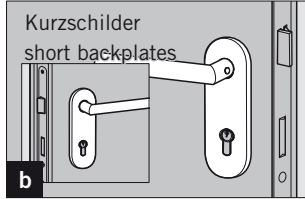
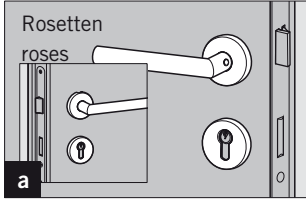
(GB) F-approval only as a complete DORMA F-set or as combination of individual DORMA FS-parts. Constituting an aligned assembly group according to DIN 18273.

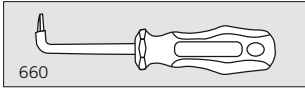




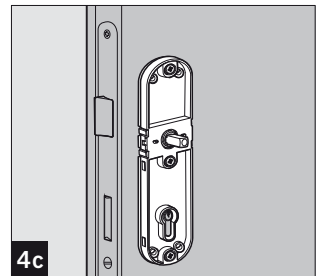
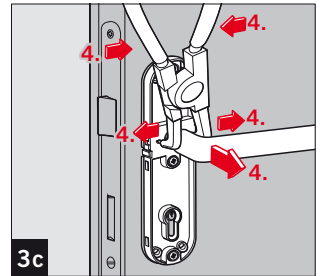
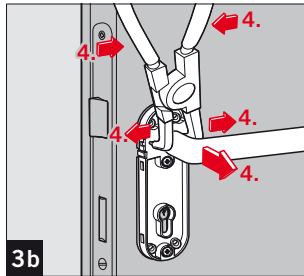
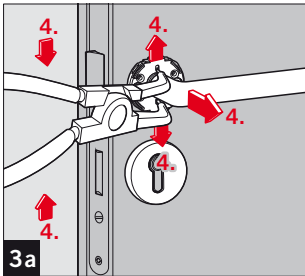
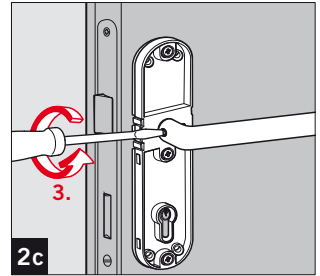
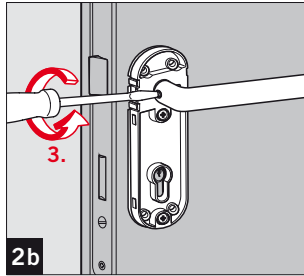
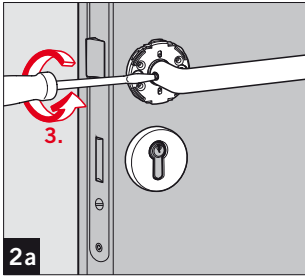
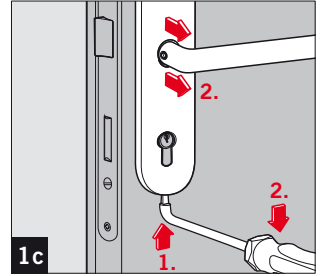
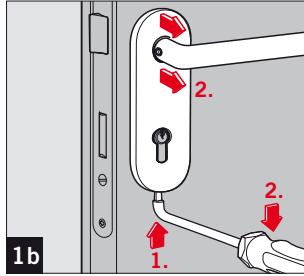
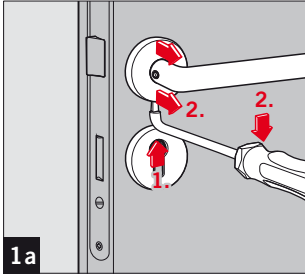
(D) FS-Zulassung nur als komplette DORMA FS-Garnitur oder als Kombination aus DORMA FS-Einzelteilen, die gemäß DIN 18273 eine abgestimmte Baugruppe bilden.

(GB) F-approval only as a complete DORMA F-set or as combination of individual DORMA FS-parts. Constituting an aligned assembly group according to DIN 18273.





Zur Demontage der Oberteile das DORMA Spezialwerkzeug 660 verwenden.
For dismounting of the covers use special DORMA tool 660.



Änderungen vorbehalten
Subject to change without notice